

Application

- It can be used to transfer clean water or other liquids similar to water in physical and chemical properties.
- It is suitable for water supply and drainage in garden irrigation, greenhouses, fish breeding and poultry raising. The pump also can be used for domestic automatic water supply places, such as lifting water from a deep well, pressure boosting of running water, etc.

Pump

- Unique ergonomic design
- Max. fluid temperature: +35°C
- Max. suction: +8 m

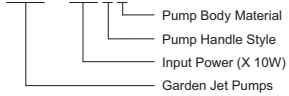
Motor

- C&U bearing
- Built-in thermal protector
- Aluminum winding
- Insulation class: F
- Protection class: IPX4
- Max. ambient temperature: +40°C



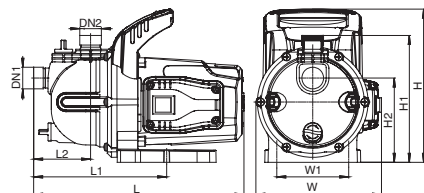
Identification Codes

LKJ - 80 1 P



Technical Data

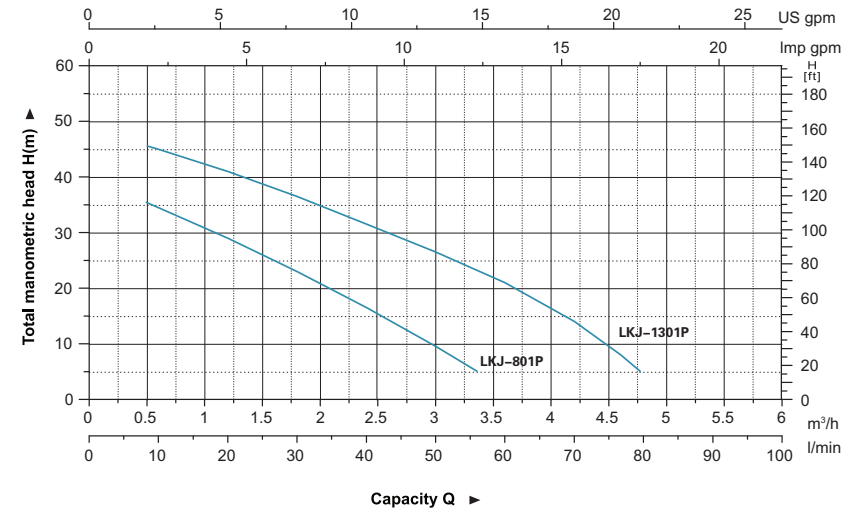
MODEL	POWER (P ₂)		Q (m ³ /h)												
	W	HP	Q (l/min)	0	0.6	1.2	1.8	2.4	3	3.6	4.2	4.8	5.4	6	
LKJ-801P	800	1	H (m)	39	34.5	29	23	16.5	9.5	-	-	-	-	-	
LKJ-1301P	1300	1.75		48	45	41	36.5	31.5	26.5	21	14	8	-	-	



Dimension

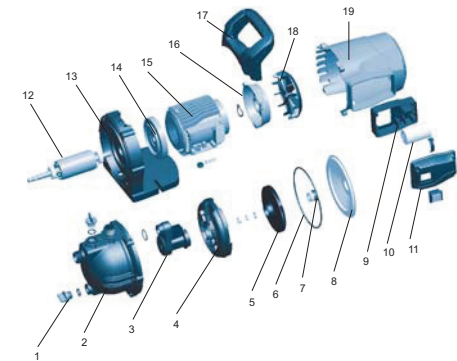
Model	DN1	DN2	L (mm)	W (mm)	H (mm)	L1 (mm)	L2 (mm)	W1 (mm)	H1 (mm)	H2 (mm)
LKJ-801P	1"	1"	350	210	255.5	221.5	94.5	120	211	140.5
LKJ-1301P			380.5	243.5	284	233.5	106.5	120	231.5	165

Hydraulic Performance Curve



Materials Table

No.	Part	Material
1	Drain plug	PP
2	Pump body	PP
3	Injector	PPO
4	Diffuser	PPO
5	Impeller	PPO
6	O-ring	NBR
7	Mechanical seal	Carbon/ceramic
8	Bracket cover	AISI 304
9	Terminal board	ABS
10	Capacitor	
11	Switch cover	ABS
12	Rotor	
13	Motor flange	PP
14	Front plate	ZL102
15	Stator	
16	End plate	ZL102
17	Handle	PP
18	Fan	PP
19	Fan cover	ABS



Package Information

Model	GW (Kgs)	L (mm)	W (mm)	H (mm)	Quantity		
					20'/pcs	40'/pcs	40H'/pcs
LKJ-801P	7.5	375	230	280	1232	2512	2826
LKJ-1301P	10.2	395	260	305	868	1778	2032